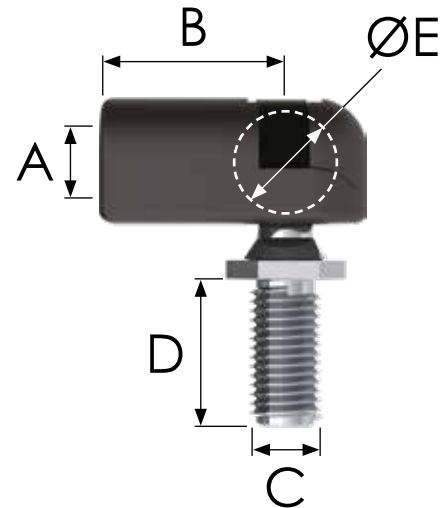
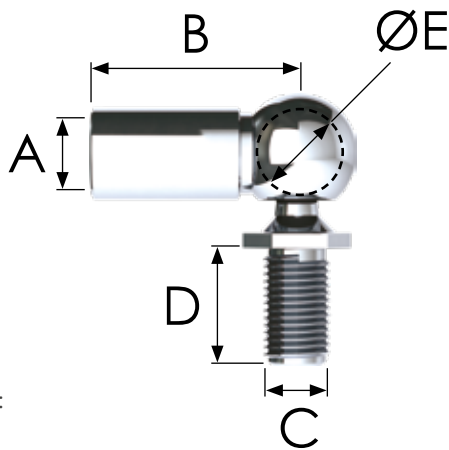


BALL JOINTS

END FITTINGS

STANDARD STEEL, 316 STAINLESS STEEL AND PLASTIC



Also available in:



Images for illustration only.

STEEL BALL JOINTS

CODE	SS CODE	A	B	C	D	E	STRUT ROD DIA
B0	-	M6	22	M5	13	8	6 & 8mm
B1	SSB1	M6	18	M6	13	10	6 & 8mm
B2	-	M6	20	M6	13	10	6 & 8mm
B3	SSB3	M6	25	M6	13	10	6 & 8mm
B4	-	M6	30	M6	13	10	6 & 8mm
B5	SSB5	M6	18	M8	13	10	6 & 8mm
B5-10S	-	M8	18	M8	13	10	10mm
B6	SSB6	M6	20	M8	13	10	6 & 8mm
B7	SSB7	M6	25	M8	13	10	6 & 8mm
B7-10S	-	M8	25	M8	13	10	10mm
B8	-	M6	30	M8	13	10	6 & 8mm
B9	SSB9	M8	18	M8	16.5	13	10mm
B10	SSB10	M8	20	M8	16.5	13	10mm
B11	SSB11	M8	25	M8	16.5	13	10mm
B12	-	M8	30	M8	16.5	13	10mm
B13	-	M10	25	M10	20	16	14mm
B13-A	-	M10	25	M8	14	13	14mm
B14	-	M10	30	M10	20	16	14mm
B14-A	-	M10	30	M8	14	13	14mm
B15	SSB15	M10	35	M10	20	16	14mm
B15-A	-	M10	35	M8	14	13	14mm
B16	-	M14	45	M14	28	20	20mm

PLASTIC BALL JOINTS

CODE	SS CODE	A	B	C	D	E	STRUT ROD DIA
PB1	-	M6	18	M6	13	10	6 & 8mm
PB2	-	M6	25	M6	13	10	6 & 8mm
PB3	-	M6	18	M8	13	10	6 & 8mm
PB4	-	M6	25	M8	13	10	6 & 8mm
PB5	-	M8	18	M8	13	10	10mm

Strut force should be less than 400N

KEY

LABEL	PART	DESCRIPTION
A	INTERNAL THREAD	Where the end fitting screws onto the strut
B	FITTING LENGTH	From the centre of the socket to the end of the fitting
C	STUD THREAD	Where the end fitting attaches to the application
D	STUD LENGTH	Length of the thread that attaches to the application
E	BALL DIAMETER	Diameter of the spherical ball attached to the stud

ADVICE ON USING END FITTINGS

- Where possible use ball joints to avoid side loading
- Ensure end fittings are fully screwed to the strut
- Ensure end fittings are in line to avoid side loading
- When using ball joints ensure the stud is fixed to the socket and the clip is in position
- Ensure the gas strut matches the chosen end fittings

BRACKETS

See pages 58 - 66 for our full range

