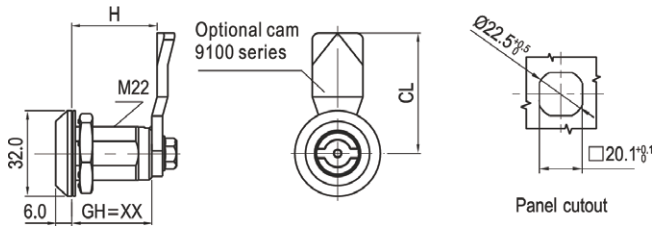




Quarter Turn Lock 1420

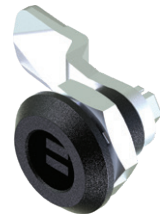


QUARTER TURN LOCKS



GH: 18

GH: 30



Cylinder Style	GH: 18				GH: 30			
	Zinc Die Or Stainless Steel 316							
	Bright Chrome	Black Textured Powder Coated	Pa Housing + Zinc Die Insert	Stainless Steel	Bright Chrome	Black Textured Powder Coated	Pa Housing+ Zinc Die Insert	Stainless Steel
Double Bit 3mm	1420-18013-30	1420-18013-20	1420-18013-20P	1420-18013-316	1420-30013-30	1420-30013-20	1420-30013-20P	1420-30013-316
Double Bit 4mm	1420-18014-30	1420-18014-20	1420-18014-20P	1420-18014-316	1420-30014-30	1420-30014-20	1420-30014-20P	1420-30014-316
Double Bit 5mm	1420-18015-30	1420-18015-20	1420-18015-20P	1420-18015-316	1420-30015-30	1420-30015-20	1420-30015-20P	1420-30015-316
2x4 Slot	1420-18024-30	1420-18024-20	1420-18024-20P	1420-18024-316	1420-30024-30	1420-30024-20	1420-30024-20P	1420-30024-316
2x4 Slot Coin Proof	1420-18124-30	1420-18124-20	1420-18124-20P	1420-18124-316	1420-30124-30	1420-30124-20	1420-30124-20P	1420-30124-316
Triangular 7mm	1420-18037-30	1420-18037-20	1420-18037-20P	1420-18037-316	1420-30037-30	1420-30037-20	1420-30037-20P	1420-30037-316
Triangular 8mm	1420-18038-30	1420-18038-20	1420-18038-20P	1420-18038-316	1420-30038-30	1420-30038-20	1420-30038-20P	1420-30038-316
Square 7mm	1420-18047-30	1420-18047-20	1420-18047-20P	1420-18047-316	1420-30047-30	1420-30047-20	1420-30047-20P	1420-30047-316
Square 8mm	1420-18048-30	1420-18048-20	1420-18048-20P	1420-18048-316	1420-30048-30	1420-30048-20	1420-30048-20P	1420-30048-316
Square 7mm With Slot	1420-18147-30	1420-18147-20	1420-18147-20P	1420-18147-316	1420-30147-30	1420-30147-20	1420-30147-20P	1420-30147-316
Square 8mm With Slot	1420-18148-30	1420-18148-20	1420-18148-20P	1420-18148-316	1420-30148-30	1420-30148-20	1420-30148-20P	1420-30148-316
Square Female 8mm	1420-18248-30	1420-18248-20	1420-18248-20P	1420-18248-316	1420-30248-30	1420-30248-20	1420-30248-20P	1420-30248-316
Hexagon Female 8mm	1420-18168-30	1420-18168-20	1420-18168-20P	1420-18168-316	1420-30168-30	1420-30168-20	1420-30168-20P	1420-30168-316
Hexagon Female 9mm	1420-18169-30	1420-18169-20	1420-18169-20P	1420-18169-316	1420-30169-30	1420-30169-20	1420-30169-20P	1420-30169-316
Hexagon Female 8mm W/ 3mm Pin	1420-18268-30	1420-18268-20	1420-18268-20P	1420-18268-316	1420-30268-30	1420-30268-20	1420-30268-20P	1420-30268-316
Hexagon Male 10mm	1420-18360-30	1420-18360-20	1420-18360-20P	1420-18360-316	1420-30360-30	1420-30360-20	1420-30360-20P	1420-30360-316
Triangular 10mm W/ M5 Screw Hole	1420-18105-30	1420-18105-20	1420-18105-20P	1420-18105-316	1420-30105-30	1420-30105-20	1420-30105-20P	1420-30105-316

Cylinder Style	GH: 36				GH: 40			
	Zinc Die Or Stainless Steel 316							
	Bright Chrome	Black Textured Powder Coated	Pa Housing + Zinc Die Insert	Stainless Steel	Bright Chrome	Black Textured Powder Coated	Pa Housing+ Zinc Die Insert	Stainless Steel
Double Bit 3mm	1420-36013-30	1420-36013-20	1420-36013-20P	1420-36013-316	1420-40013-30	1420-40013-20	1420-40013-20P	1420-40013-316
Double Bit 4mm	1420-36014-30	1420-36014-20	1420-36014-20P	1420-36014-316	1420-40014-30	1420-40014-20	1420-40014-20P	1420-40014-316
Double Bit 5mm	1420-36015-30	1420-36015-20	1420-36015-20P	1420-36015-316	1420-40015-30	1420-40015-20	1420-40015-20P	1420-40015-316
2x4 Slot	1420-36024-30	1420-36024-20	1420-36024-20P	1420-36024-316	1420-40024-30	1420-40024-20	1420-40024-20P	1420-40024-316
2x4 Slot Coin Proof	1420-36124-30	1420-36124-20	1420-36124-20P	1420-36124-316	1420-40124-30	1420-40124-20	1420-40124-20P	1420-40124-316
Triangular 7mm	1420-36037-30	1420-36037-20	1420-36037-20P	1420-36037-316	1420-40037-30	1420-40037-20	1420-40037-20P	1420-40037-316
Triangular 8mm	1420-36038-30	1420-36038-20	1420-36038-20P	1420-36038-316	1420-40038-30	1420-40038-20	1420-40038-20P	1420-40038-316
Square 7mm	1420-36047-30	1420-36047-20	1420-36047-20P	1420-36047-316	1420-40047-30	1420-40047-20	1420-40047-20P	1420-40047-316
Square 8mm	1420-36048-30	1420-36048-20	1420-36048-20P	1420-36048-316	1420-40048-30	1420-40048-20	1420-40048-20P	1420-40048-316
Square 7mm With Slot	1420-36147-30	1420-36147-20	1420-36147-20P	1420-36147-316	1420-40147-30	1420-40147-20	1420-40147-20P	1420-40147-316
Square 8mm With Slot	1420-36148-30	1420-36148-20	1420-36148-20P	1420-36148-316	1420-40148-30	1420-40148-20	1420-40148-20P	1420-40148-316
Square Female 8mm	1420-36248-30	1420-36248-20	1420-36248-20P	1420-36248-316	1420-40248-30	1420-40248-20	1420-40248-20P	1420-40248-316
Hexagon Female 8mm	1420-36168-30	1420-36168-20	1420-36168-20P	1420-36168-316	1420-40168-30	1420-40168-20	1420-40168-20P	1420-40168-316
Hexagon Female 9mm	1420-36169-30	1420-36169-20	1420-36169-20P	1420-36169-316	1420-40169-30	1420-40169-20	1420-40169-20P	1420-40169-316
Hexagon Female 8mm W/ 3mm Pin	1420-36268-30	1420-36268-20	1420-36268-20P	1420-36268-316	1420-40268-30	1420-40268-20	1420-40268-20P	1420-40268-316
Hexagon Male 10mm	1420-36360-30	1420-36360-20	1420-36360-20P	1420-36360-316	1420-40360-30	1420-40360-20	1420-40360-20P	1420-40360-316
Triangular 10mm W/ M5 Screw Hole	1420-36105-30	1420-36105-20	1420-36105-20P	1420-36105-316	1420-40105-30	1420-40105-20	1420-40105-20P	1420-40105-316

Accessories ref. page 238. Cam ref. page 232.

www.metrolmotion.com