

GH: 36



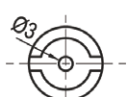
GH: 40



GH: 50



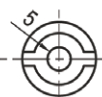
GH: 60



Double Bit 3mm



Double Bit 4mm



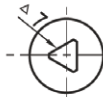
Double Bit 5mm



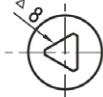
2x4 Slot



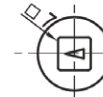
2x4 Slot coin proof



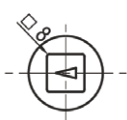
Triangular 7mm



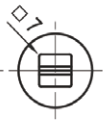
Triangular 8mm



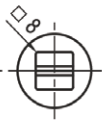
Square 7mm



Square 8mm



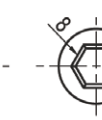
Square 7mm with slot



Square 8mm with slot



Female Square 8mm



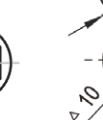
Hexagon female 8mm



Hexagon female 8mm with pin 3mm



Hexagon male 10mm



Triangular 10mm with M5 screw hole

Zinc die handle and housing (black powder coated or bright chrome).
Mild steel zinc plated cam. Available in full SS316.

Cylinder Style	GH: 50				GH: 60			
	Zinc Die Or Stainless Steel 316							
	Bright Chrome	Black Textured Powder Coated	Pa Housing + Zinc Die Insert	Stainless Steel	Bright Chrome	Black Textured Powder Coated	Pa Housing + Zinc Die Insert	Stainless Steel
Double Bit 3mm	1420-50013-30	1420-50013-20	1420-50013-20P	1420-50013-316	1420-60013-30	1420-60013-20	1420-60013-20P	1420-60013-316
Double Bit 4mm	1420-50014-30	1420-50014-20	1420-50014-20P	1420-50014-316	1420-60014-30	1420-60014-20	1420-60014-20P	1420-60014-316
Double Bit 5mm	1420-50015-30	1420-50015-20	1420-50015-20P	1420-50015-316	1420-60015-30	1420-60015-20	1420-60015-20P	1420-60015-316
2x4 Slot	1420-50024-30	1420-50024-20	1420-50024-20P	1420-50024-316	1420-60024-30	1420-60024-20	1420-60024-20P	1420-60024-316
2x4 Slot Coin Proof	1420-50124-30	1420-50124-20	1420-50124-20P	1420-50124-316	1420-60124-30	1420-60124-20	1420-60124-20P	1420-60124-316
Triangular 7mm	1420-50037-30	1420-50037-20	1420-50037-20P	1420-50037-316	1420-60037-30	1420-60037-20	1420-60037-20P	1420-60037-316
Triangular 8mm	1420-50038-30	1420-50038-20	1420-50038-20P	1420-50038-316	1420-60038-30	1420-60038-20	1420-60038-20P	1420-60038-316
Square 7mm	1420-50047-30	1420-50047-20	1420-50047-20P	1420-50047-316	1420-60047-30	1420-60047-20	1420-60047-20P	1420-60047-316
Square 8mm	1420-50048-30	1420-50048-20	1420-50048-20P	1420-50048-316	1420-60048-30	1420-60048-20	1420-60048-20P	1420-60048-316
Square 7mm With Slot	1420-50147-30	1420-50147-20	1420-50147-20P	1420-50147-316	1420-60147-30	1420-60147-20	1420-60147-20P	1420-60147-316
Square 8mm With Slot	1420-50148-30	1420-50148-20	1420-50148-20P	1420-50148-316	1420-60148-30	1420-60148-20	1420-60148-20P	1420-60148-316
Female Square 8mm	1420-50248-30	1420-50248-20	1420-50248-20P	1420-50248-316	1420-60248-30	1420-60248-20	1420-60248-20P	1420-60248-316
Hexagon Female 8mm	1420-50168-30	1420-50168-20	1420-50168-20P	1420-50168-316	1420-60168-30	1420-60168-20	1420-60168-20P	1420-60168-316
Hexagon Female 9mm	1420-50169-30	1420-50169-20	1420-50169-20P	1420-50169-316	1420-60169-30	1420-60169-20	1420-60169-20P	1420-60169-316
Hexagon Female 8mm W/ 3mm Pin	1420-50268-30	1420-50268-20	1420-50268-20P	1420-50268-316	1420-60268-30	1420-60268-20	1420-60268-20P	1420-60268-316
Hexagon Male 10mm	1420-50360-30	1420-50360-20	1420-50360-20P	1420-50360-316	1420-60360-30	1420-60360-20	1420-60360-20P	1420-60360-316
Triangular 10mm W/ M5 Screw Hole	1420-50105-30	1420-50105-20	1420-50105-20P	1420-50105-316	1420-60105-30	1420-60105-20	1420-60105-20P	1420-60105-316

Accessories ref. page 238. Cam ref. page 232.