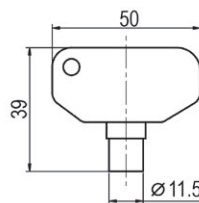
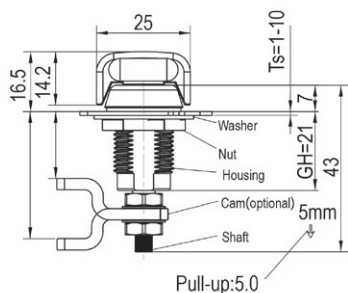




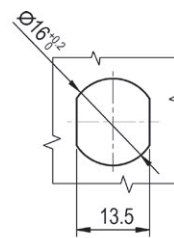
# Compression Latch, Mini Version, Adjustable Grip Range 1421

**IP65 RL**

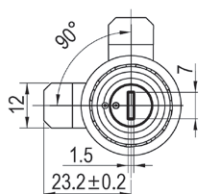
COMPRESSION LATCHES



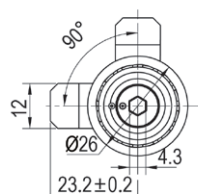
Nickel plated Key, for key operated  
(part#) : 9200-1421-80



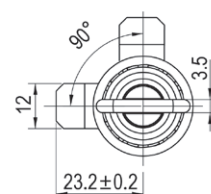
Panel Cutout



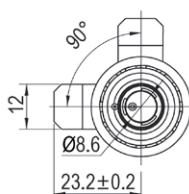
Slotted recess



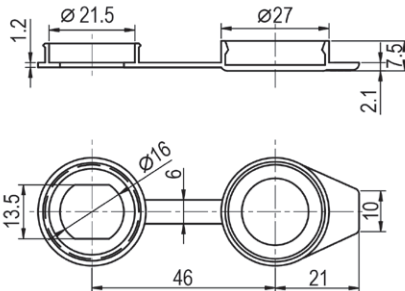
Tool-operated



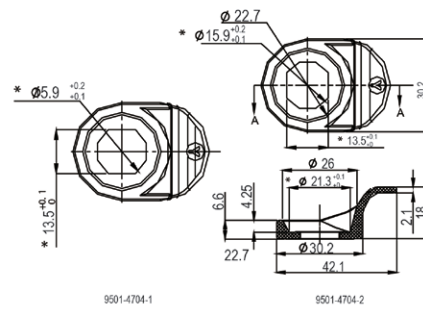
Knob style



Key-operated



Water dust proof cover  
(part#) : 9401-4102



Pull Tab  
(part#) : 9501-4704-1  
9501-4704-2

Zinc die (black powder coated or bright chrome), mild steel zinc plated cam.

Grip Range		Head Style			
Min	Max	Slotted Recess	Tool Operated	Knob Style	Key Operated
3.2	6.4	1421-05-1510	1421-04-1510	1421-08-1510	1421-20-1510
6.4	9.5	1421-05-2510	1421-04-2510	1421-08-2510	1421-20-2510
9.5	12.7	1421-05-3510	1421-04-3510	1421-08-3510	1421-20-3510
12.7	15.9	1421-05-4510	1421-04-4510	1421-08-4510	1421-20-4510
15.9	19	1421-05-5510	1421-04-5510	1421-08-5510	1421-20-5510
19	22.2	1421-05-6510	1421-04-6510	1421-08-6510	1421-20-6510
22.2	25.4	1421-05-7510	1421-04-7510	1421-08-7510	1421-20-7510
25.4	28.6	1421-05-8510	1421-04-8510	1421-08-8510	1421-20-8510

Accessories ref. page 238.

Remark 1. Bright chrome finish available, for more information contact us.

www.metrolmotion.com