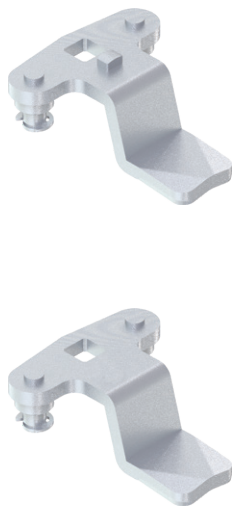


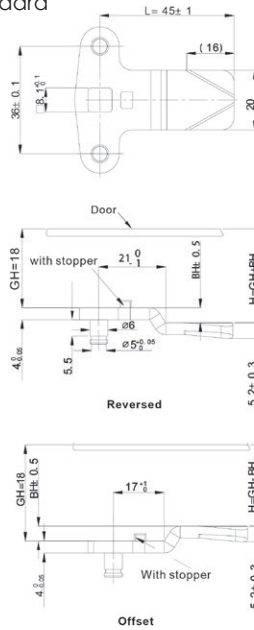


# Cam 9100

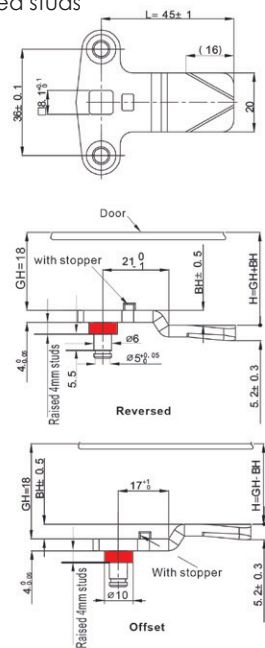
## 3 POINT CAMS



Normal/standard



Raised studs



Mild steel zinc plated, stainless steel material upon request

H=GH+BH							Standard		Raised Studs	
BH	GH=18	GH=30	GH=36	GH=40	GH=50	GH=60	With Stopper	Without Stopper	With Stopper	Without Stopper
-16	2	14	20	24	34	44				
-14	4	16	22	26	36	46	9100-9504	9100-9504F	9100-9604	9100-9604F
-12	6	18	24	28	38	48	9100-9506	9100-9506F	9100-9606	9100-9606F
-10	8	20	26	30	40	50	9100-9508	9100-9508F	9100-9608	9100-9608F
-8	10	22	28	32	42	52	9100-9510	9100-9510F	9100-9610	9100-9610F
-5	13	25	31	35	45	55	9100-9513	9100-9513F	9100-9613	9100-9613F
-4	14	26	32	36	46	56	9100-9514	9100-9514F	9100-9614	9100-9614F
-2	16	28	34	38	48	58	9100-9516	9100-9516F	9100-9616	9100-9616F
0	18	30	36	40	50	60	9100-9518	9100-9518F	9100-9618	9100-9618F
+2	20	32	38	42	52	62	9100-9520	9100-9520F	9100-9620	9100-9620F
+4	22	34	40	44	54	64	9100-9522	9100-9522F	9100-9622	9100-9622F
+6	24	36	42	46	56	66	9100-9524	9100-9524F	9100-9624	9100-9624F
+7	25	37	43	47	57	67	9100-9525	9100-9525F	9100-9625	9100-9625F
+8	26	38	44	48	58	68	9100-9526	9100-9526F	9100-9626	9100-9626F
+10	28	40	46	50	60	70	9100-9528	9100-9528F	9100-9628	9100-9628F
+12	30	42	48	52	62	72	9100-9530	9100-9530F	9100-9630	9100-9630F
+14	32	44	50	54	64	74	9100-9532	9100-9532F	9100-9632	9100-9632F
+16	34	46	52	56	66	76	9100-9534	9100-9534F	9100-9634	9100-9634F
+17	35	47	53	57	67	77	9100-9535	9100-9535F	9100-9635	9100-9635F
+18	36	48	54	58	68	78	9100-9536	9100-9536F	9100-9636	9100-9636F
+20	38	50	56	60	70	80	9100-9538	9100-9538F	9100-9638	9100-9638F
+22	40	52	58	62	72	82	9100-9540	9100-9540F	9100-9640	9100-9640F
+24	42	54	60	64	74	84	9100-9542	9100-9542F	9100-9642	9100-9642F
+26	44	56	62	66	76	86	9100-9544	9100-9544F	9100-9644	9100-9644F
+27	45	57	63	67	77	87	9100-9545	9100-9545F	9100-9645	9100-9645F
+29	47	59	65	69	79	89	9100-9547	9100-9547F	9100-9647	9100-9647F
+32	50	62	68	72	82	92	9100-9550	9100-9550F	9100-9650	9100-9650F
+35	53	65	71	75	85	95				
+37	55	67	73	77	87	97				