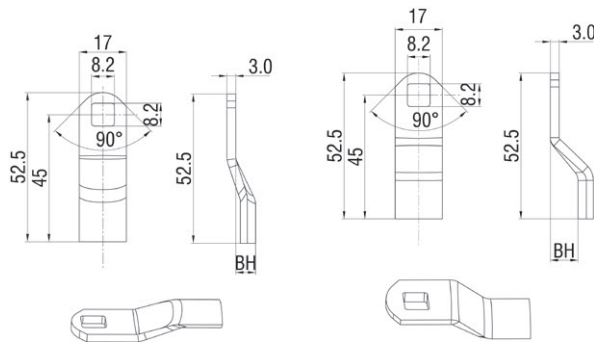


Mild steel zinc plated.

Cam Type	Total Grip	Cam Offset	Max.outer Door Ts For Assembled Latch	Cam Type	Total Grip	Cam Offset	Max.outer Door Ts For Assembled Latch
9100-0700	/	/	/	9100-0710	18	2	6
9100-0701	/	/	/	9100-0711	20	4	6
9100-0702	2	-14	1	9100-0712	22	6	6
9100-0703	4	-12	3	9100-0713	24	8	6
9100-0704	6	-10	5	9100-0714	26	10	6
9100-0705	8	-8	6	9100-0715	28	12	6
9100-0706	10	-6	6	9100-0716	30	14	6
9100-0707	12	-4	6	9100-0717	32	16	6
9100-0708	14	-2	6	9100-0718	34	18	6
9100-0709	16	0	6	9100-0719	36	20	6

Lock ref. 1415 Series.



Mild steel zinc plated.

Cam Type	Total Grip	Cam Offset	Max.outer Door Ts For Assembled Latch	Cam Type	Total Grip	Cam Offset	Max.outer Door Ts For Assembled Latch
9100-0800	15	-18	14	9100-0810	35	2	7
9100-0801	17	-16	16	9100-0811	37	4	7
9100-0802	19	-14	18	9100-0812	29	6	7
9100-0803	21	-12	18	9100-0813	41	8	7
9100-0804	23	-10	18	9100-0814	43	10	7
9100-0805	25	-8	18	9100-0815	45	12	7
9100-0806	27	-6	18	9100-0816	47	14	7
9100-0807	29	-4	18	9100-0817	49	16	7
9100-0808	31	-2	18	9100-0818	51	18	7
9100-0809	33	0	18	9100-0819	53	20	7

1. Lock 1423 Series fixed grip range. 2. Lock 1436 Series fixed grip range
3. Lock 1437 Series short shaft. 4. Lock 1439 Series short shaft.