

| MODEL/STROKE | SPRING FORCE (daN) | | L MIN | L | GAS VOL. (L) | WEIGHT (KG) |
|--------------|--------------------|---------|-------|-----|--------------|-------------|
| | INITIAL | MAXIMUM | | | | |
| EX0320-007 | 320 | 480 | 37 | 44 | 0.004 | 0.09 |
| EX0320-010 | | 490 | 40 | 50 | 0.005 | 0.10 |
| EX0320-013 | | 500 | 43 | 56 | 0.006 | 0.10 |
| EX0320-015 | | 510 | 45 | 60 | 0.007 | 0.10 |
| EX0320-019 | | 510 | 49 | 68 | 0.009 | 0.11 |
| EX0320-025 | | 520 | 55 | 80 | 0.011 | 0.12 |
| EX0320-032 | | 530 | 62 | 94 | 0.014 | 0.13 |
| EX0320-038 | | 530 | 68 | 106 | 0.017 | 0.14 |
| EX0320-050 | | 530 | 80 | 130 | 0.022 | 0.17 |
| EX0320-063 | | 530 | 93 | 156 | 0.028 | 0.19 |
| EX0320-075 | | 530 | 110 | 185 | 0.034 | 0.21 |
| EX0320-080 | | 530 | 115 | 195 | 0.036 | 0.23 |
| EX0320-100 | | 530 | 135 | 235 | 0.044 | 0.25 |
| EX0320-125 | | 530 | 160 | 285 | 0.055 | 0.30 |

SPECIAL STROKE SIZES AVAILABLE UPON REQUEST

USE ONLY NITROGEN

MAX. PRESSURE: 180 BAR

MIN. PRESSURE: 20 BAR

MAX. PISTON VELOCITY: 1.6M/SEC



SRS
SECONDARY ROD SCRAPER

PREVENT DUST, DIRT AND OIL FROM REDUCING THE LIFE OF YOUR GAS SPRINGS

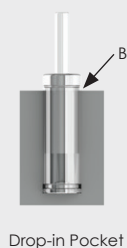
CODE: SRS-15

GAS SPRING FORCE CALCULATOR

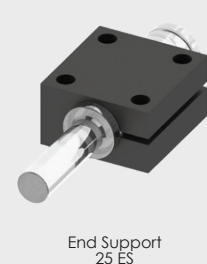
www.metrol.com/gas-spring-force-calculator

MOUNTING EXAMPLES

(all dimensions are mm, unless otherwise stated) for other possible mounting options see pages 84 - 88



BODY $\text{Ø} +1.0$
-0.5



Please note: gas springs should always be positively retained where possible. How to order: Spring Type x Stroke + Mounting Type ie: EX0320 x 007 + FF